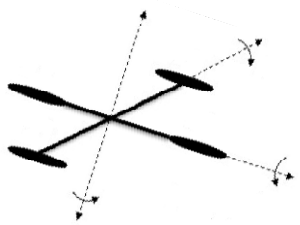
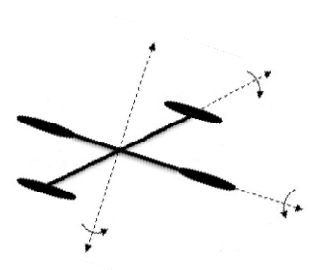
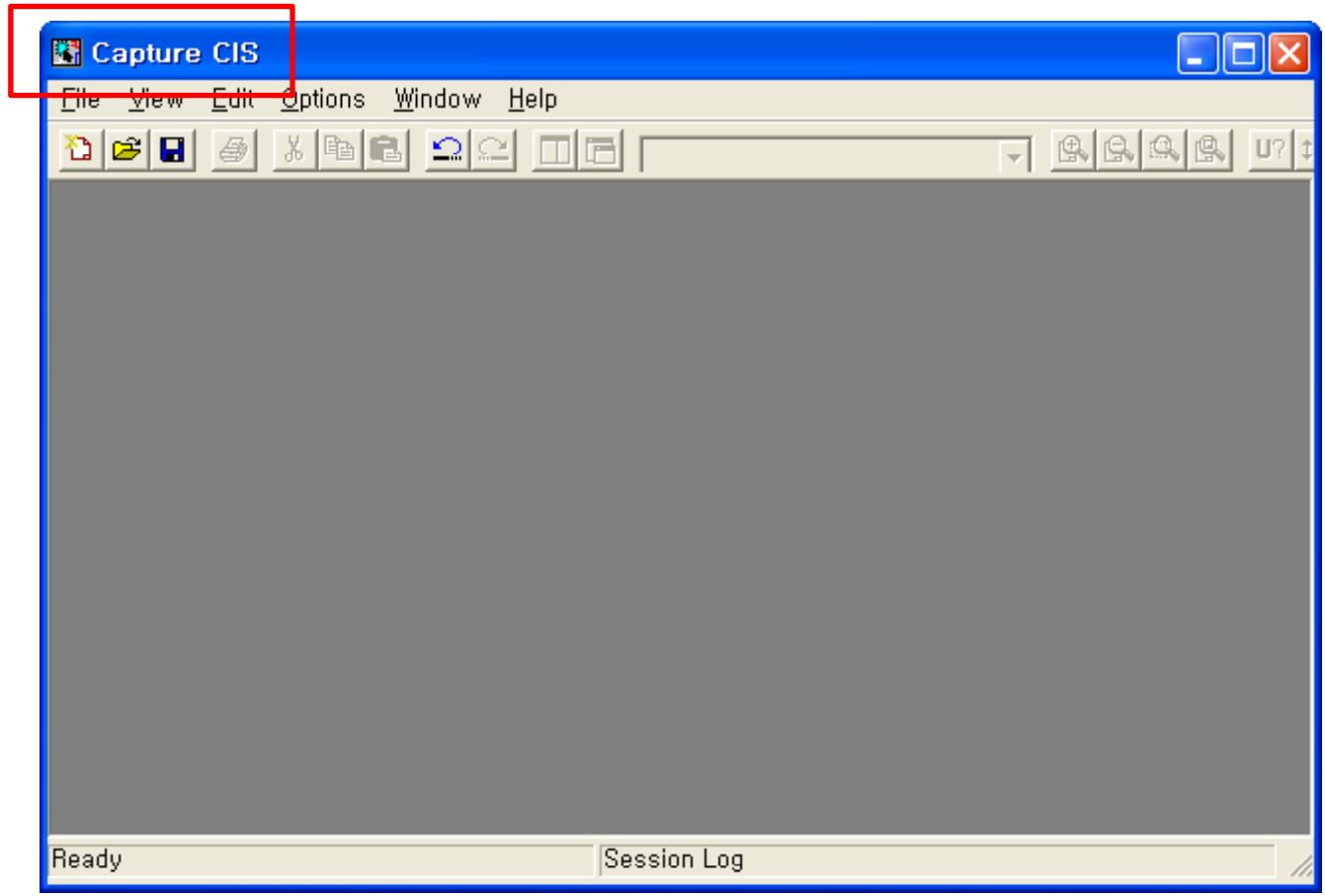
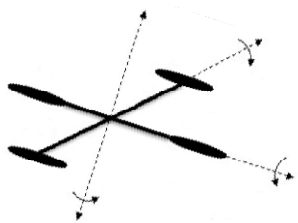
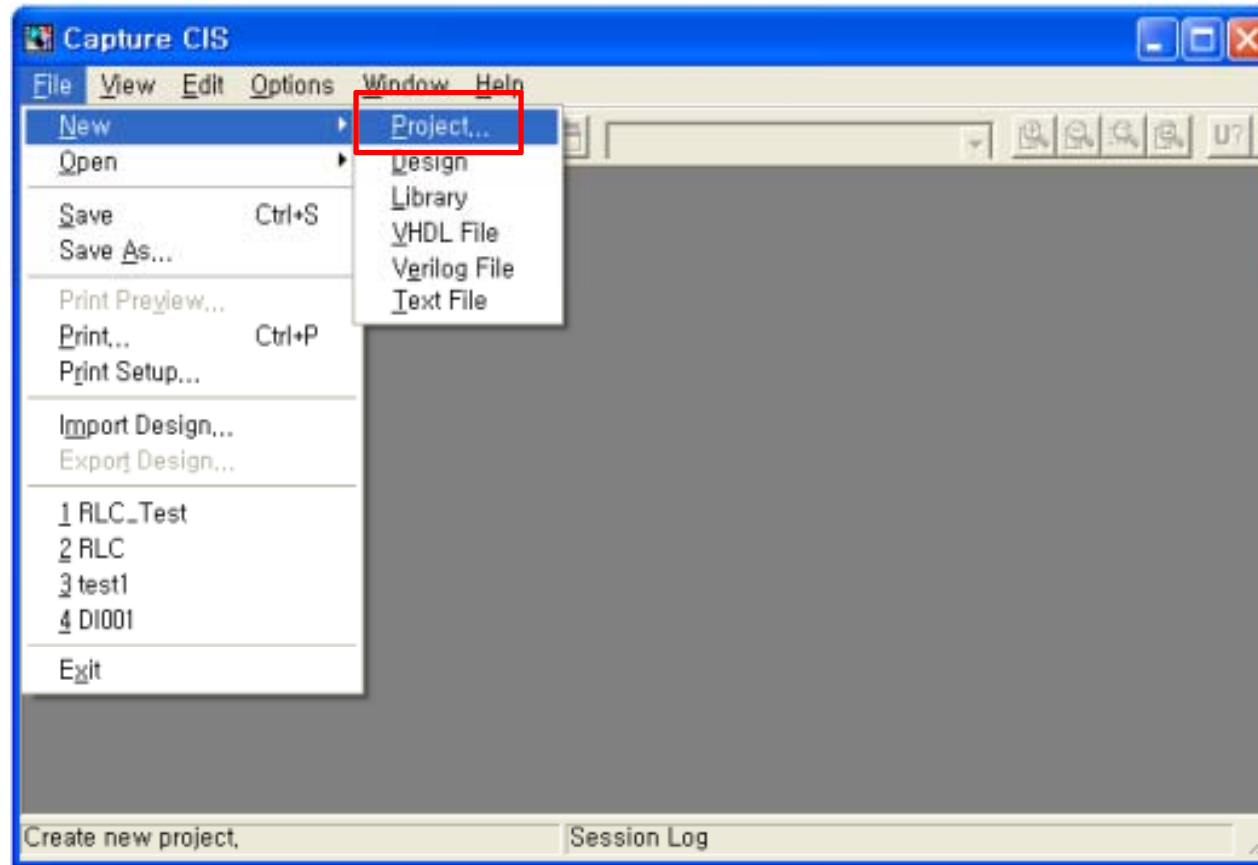
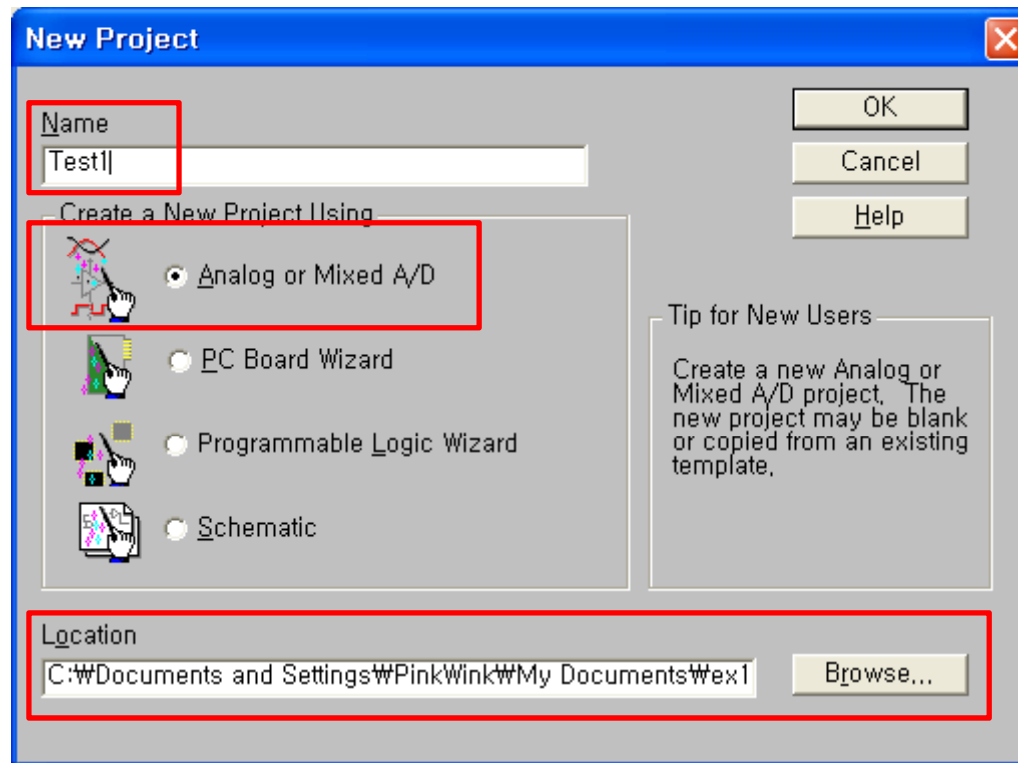

1. 간단한 아날로그 회 로 시뮬레이션 하기









Analog or Mixed A/D : 회로를 설계하기 위한 OrCAD Pspice

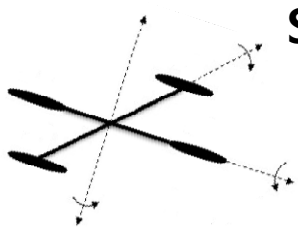
PC Board Wizard : PCB를 설계하기 위한 OrCAD Layout

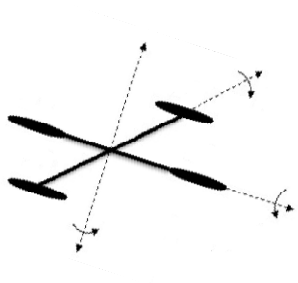
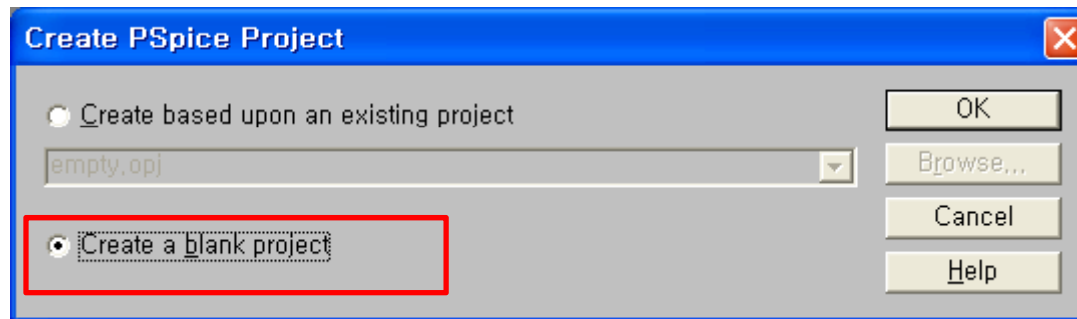
Programmable Logic Wizard

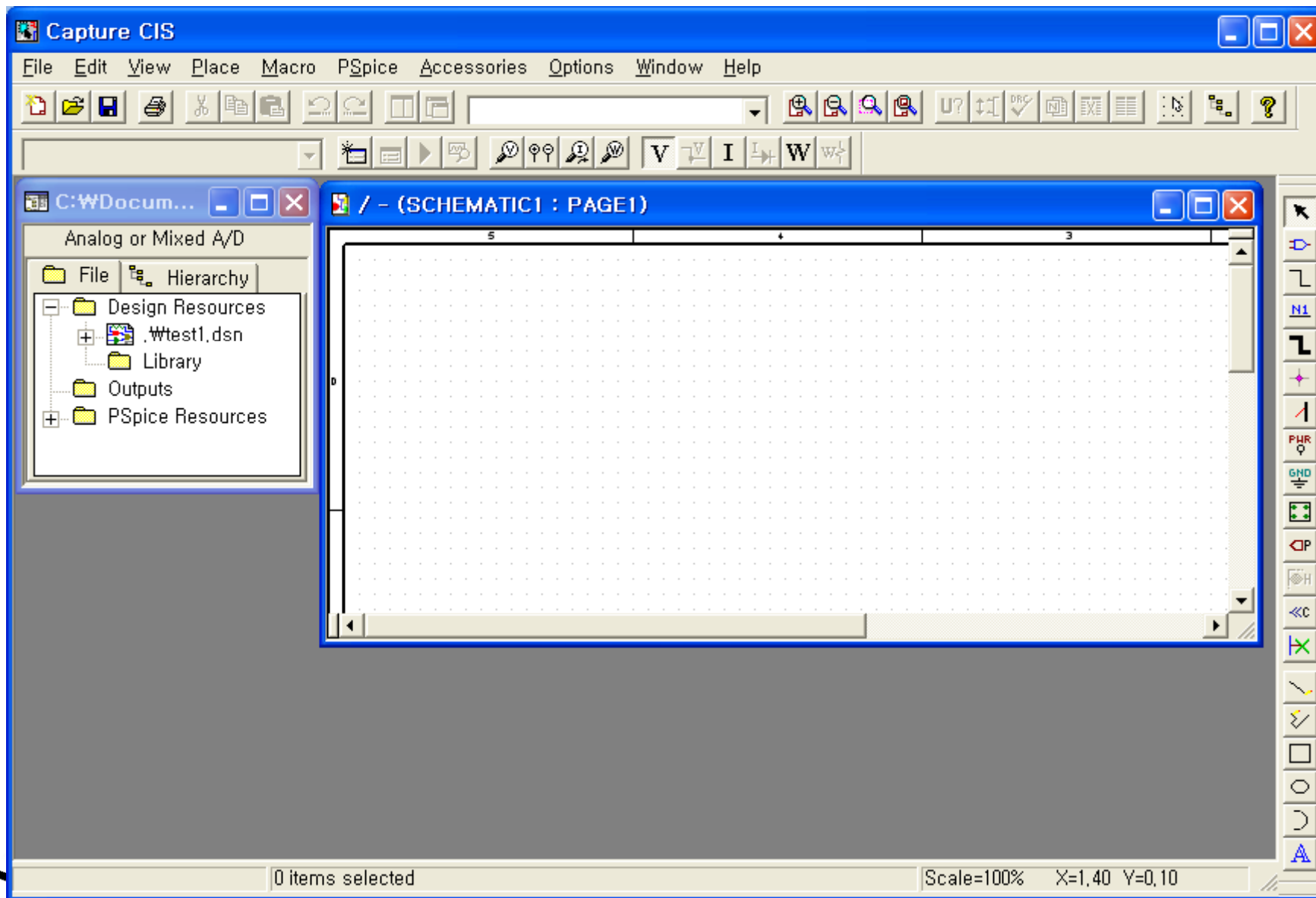
: PLD 내에 포함되는 회로를 설계

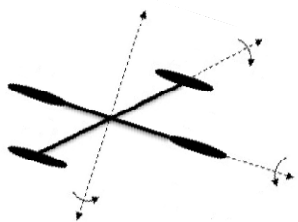
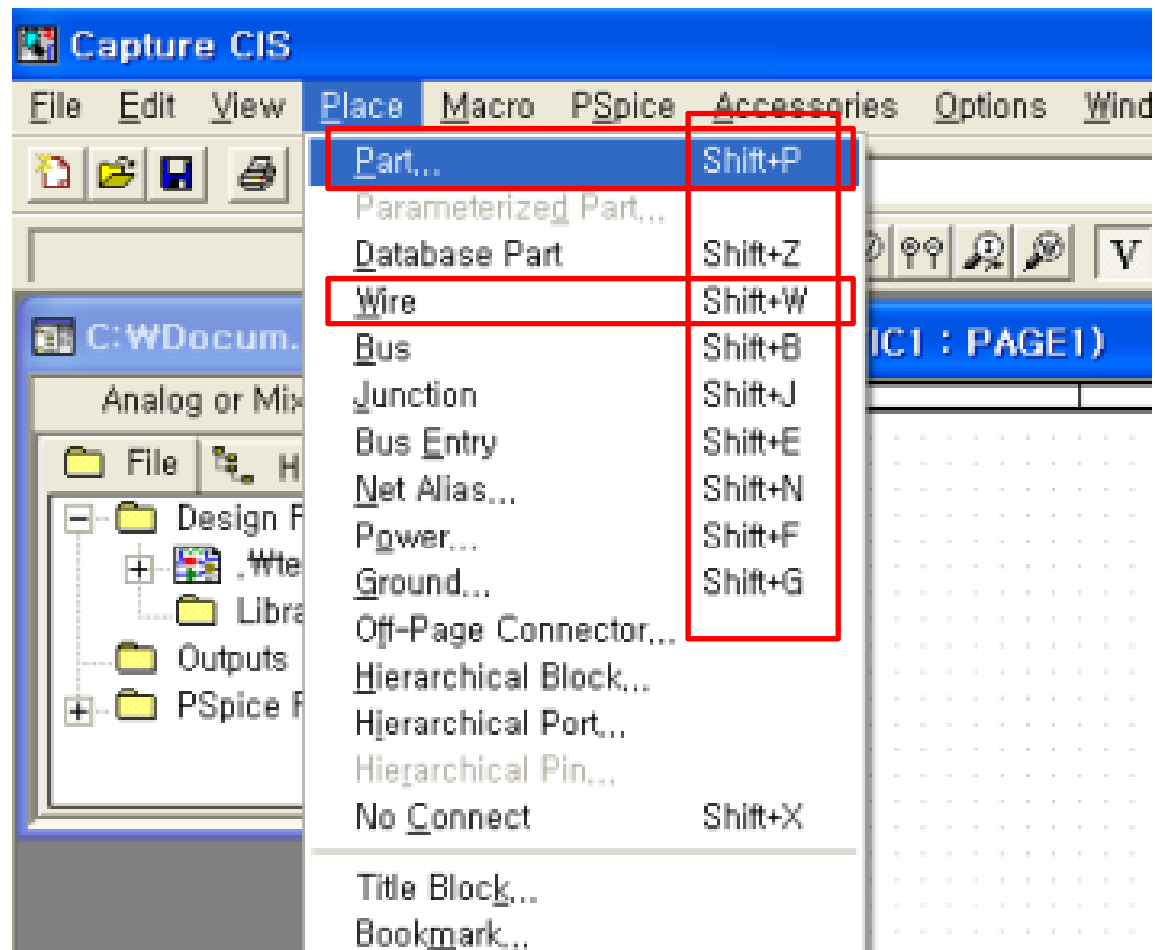
Schematic

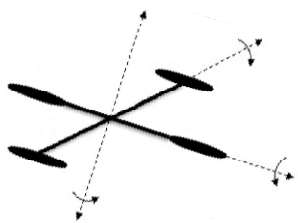
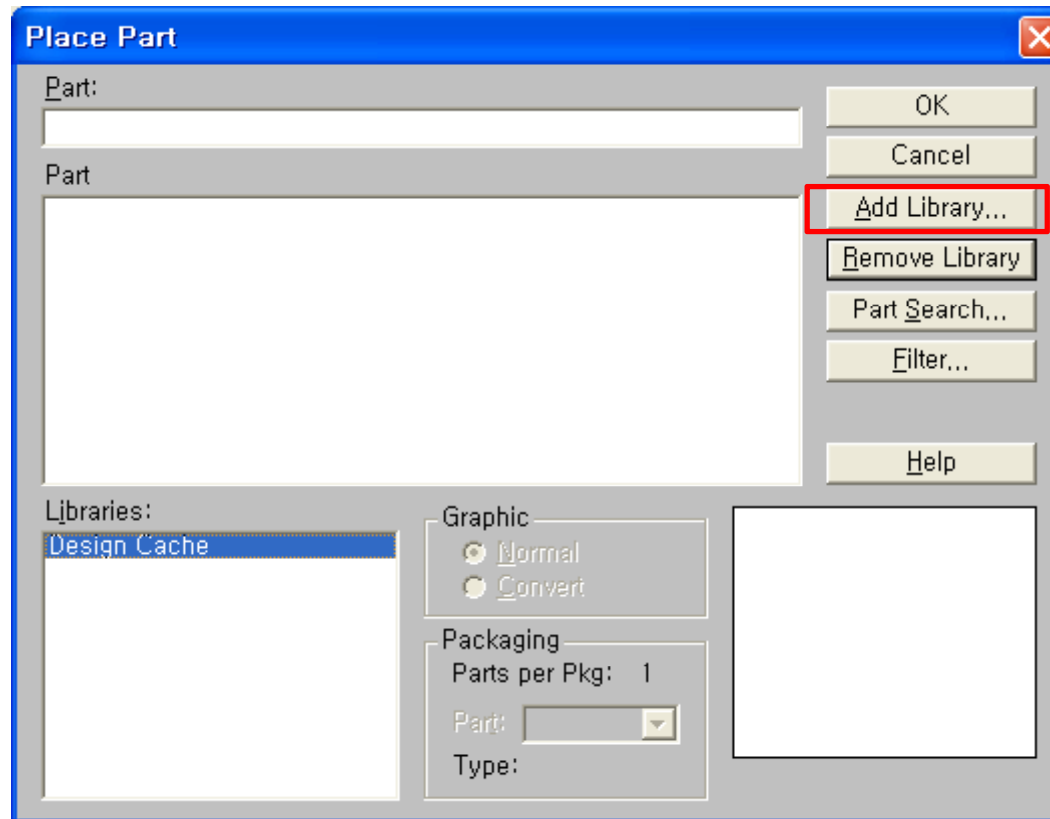
: 단순 회로도면 작성

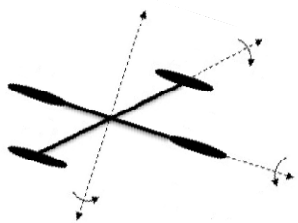
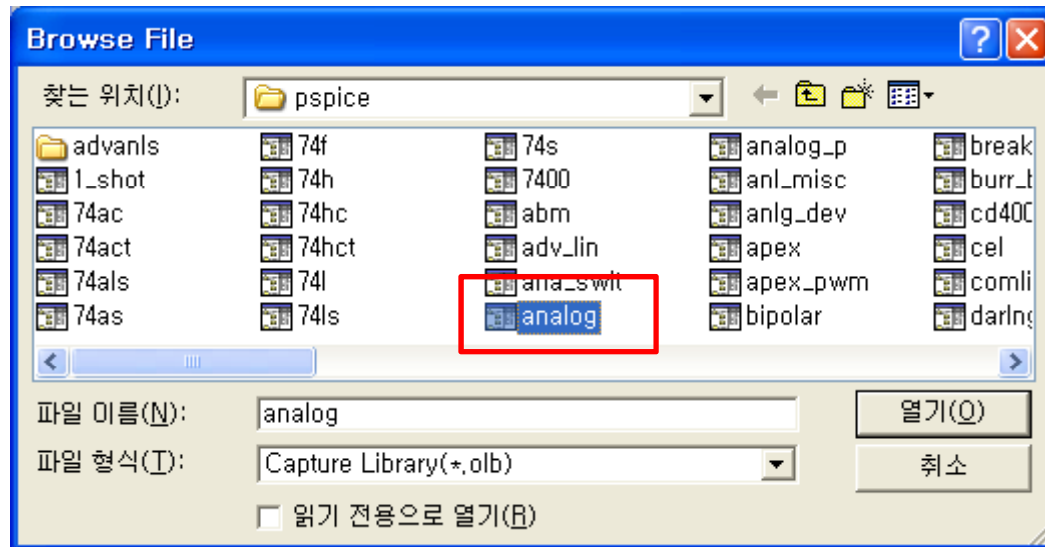


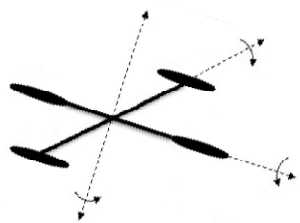
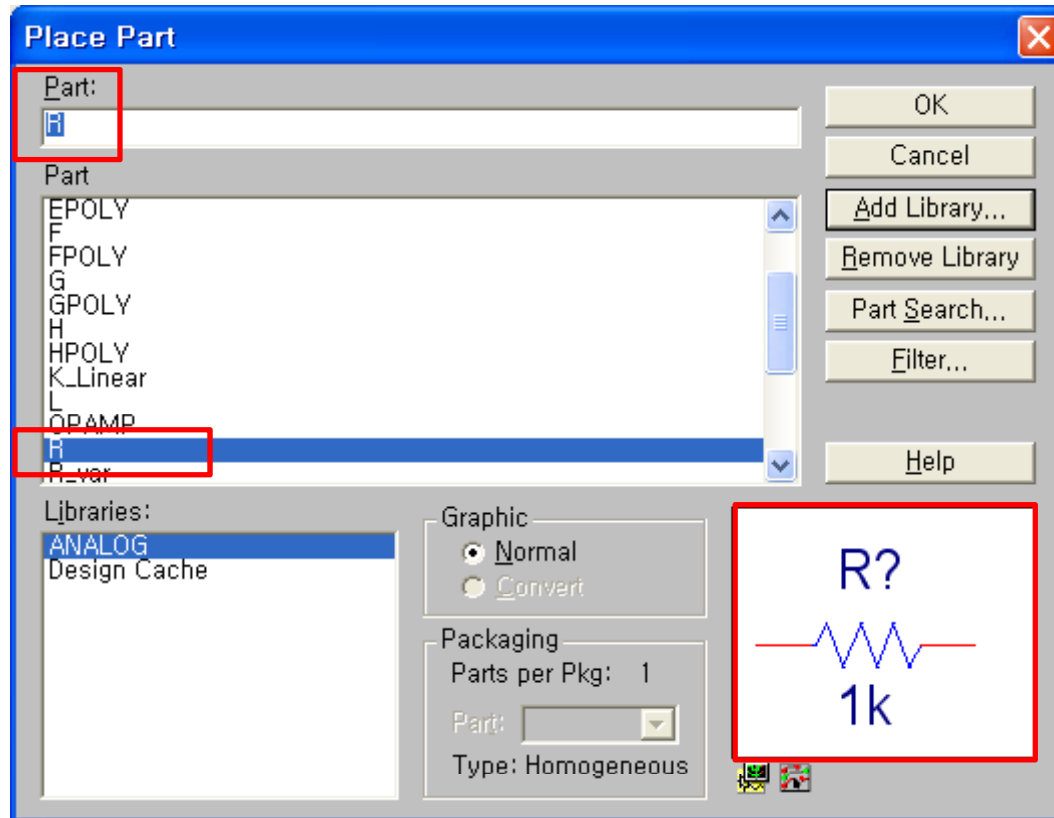


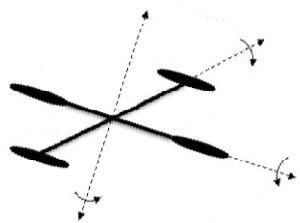
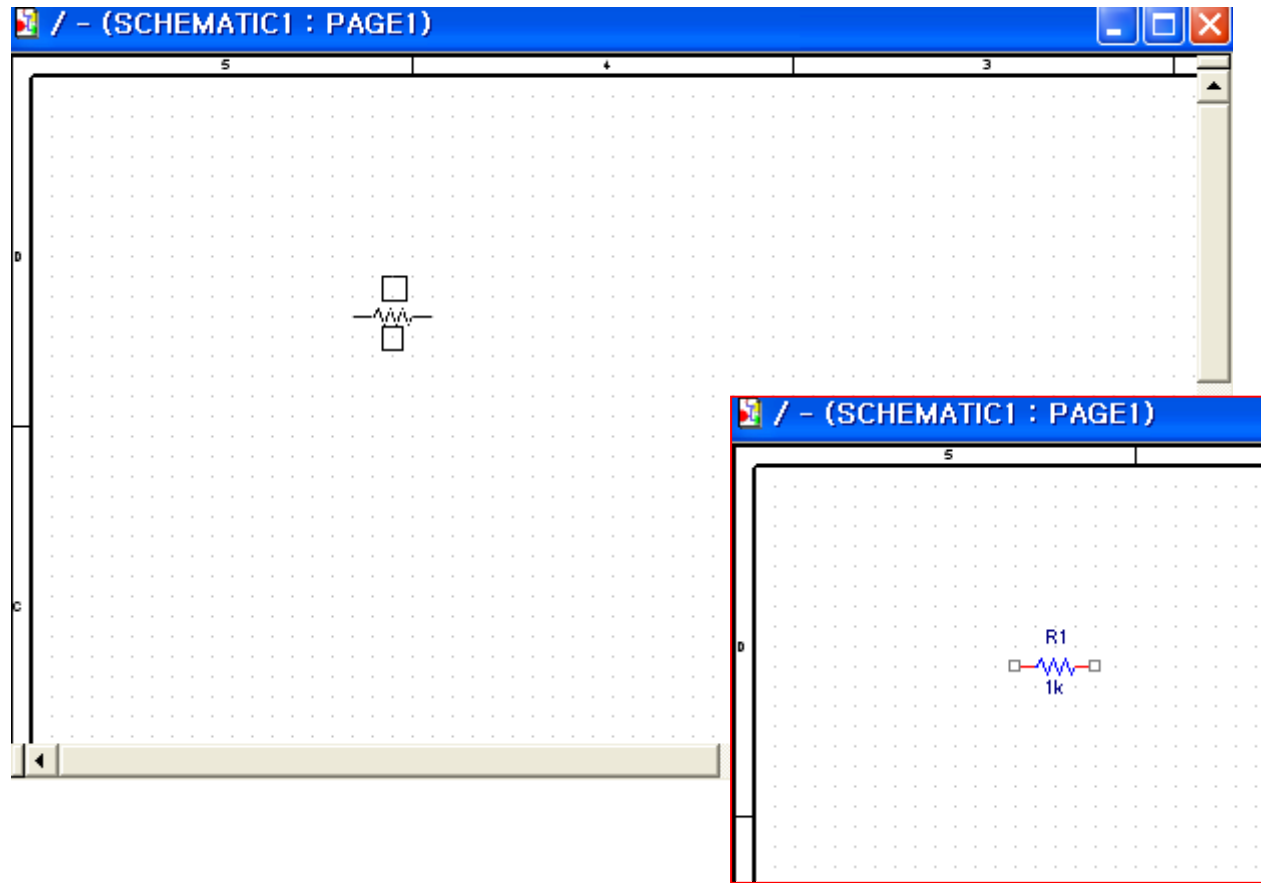














Place Part [X]

Part:
C

Part

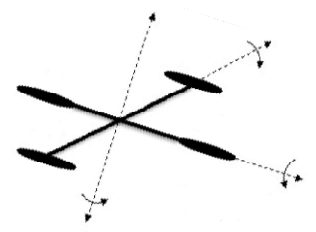
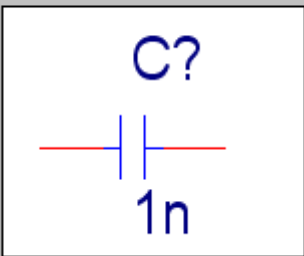
- C
- C_elect
- C_var
- E
- FPOLY
- F
- FPOLY
- G
- GPOLY
- H
- HPOLY
- K_Linear

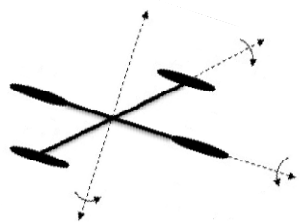
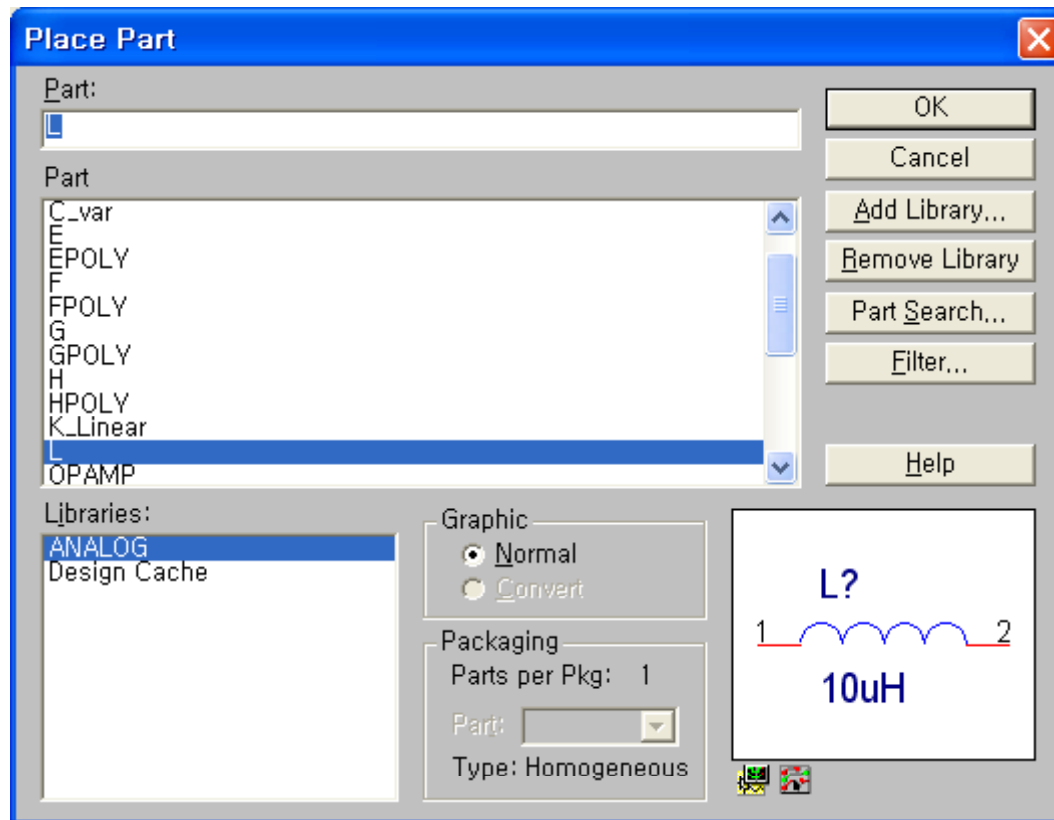
Libraries:
ANALOG
Design Cache

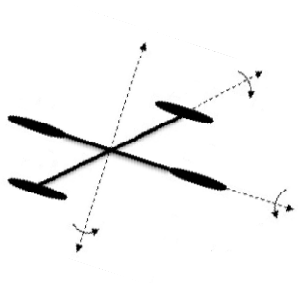
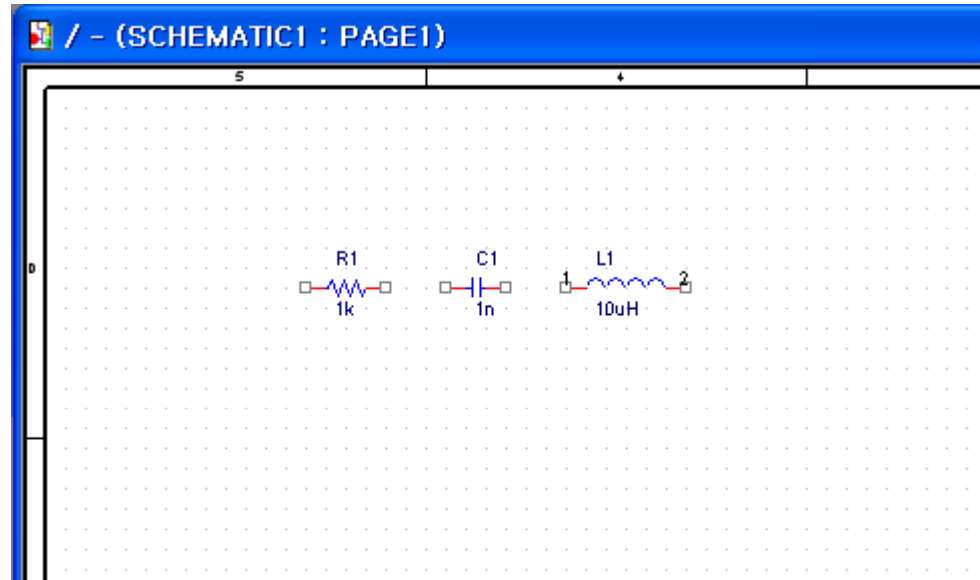
Graphic
 Normal
 Convert

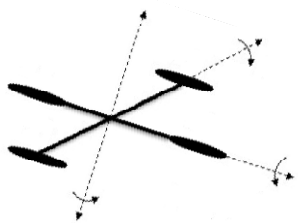
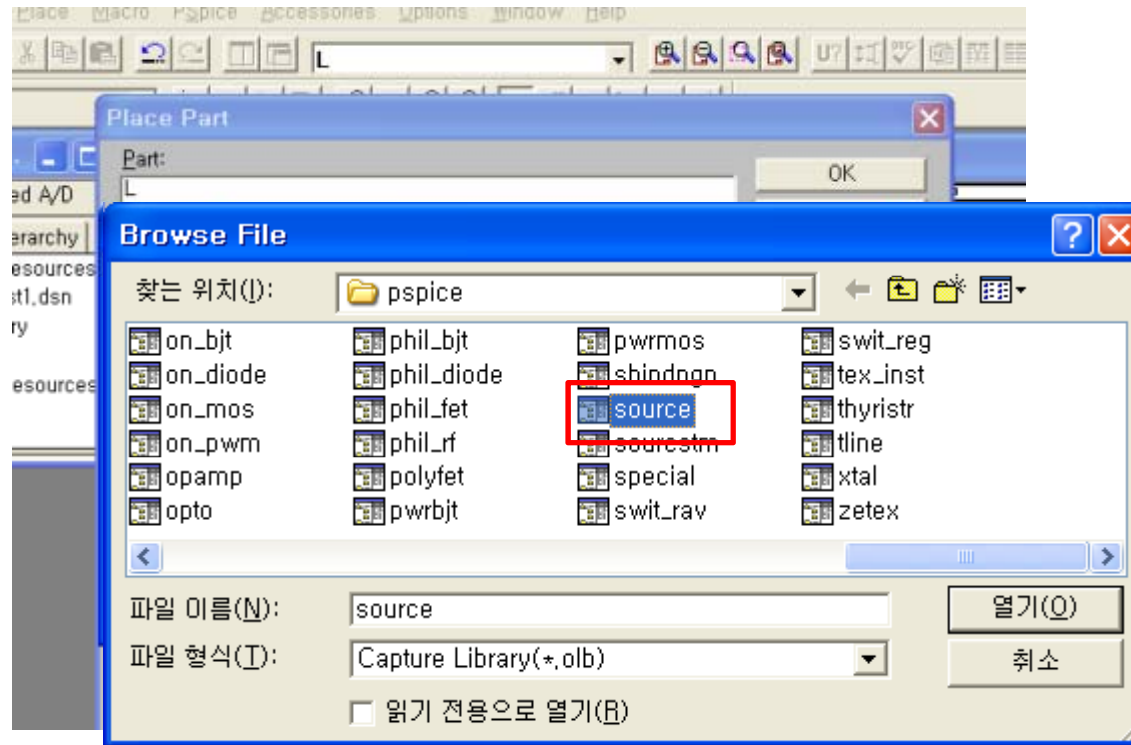
Packaging
Parts per Pkg: 1
Part: [v]
Type: Homogeneous

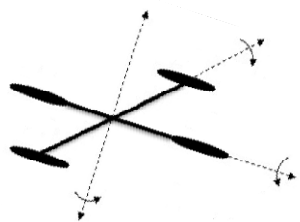
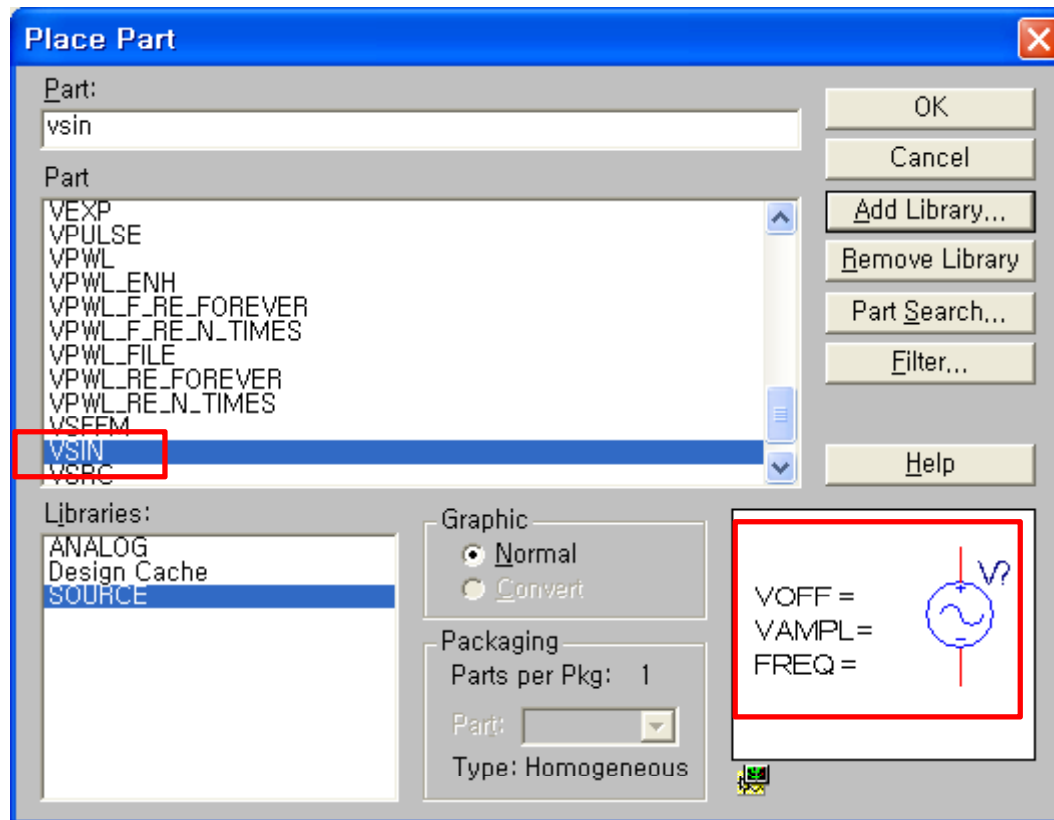
OK
Cancel
Add Library...
Remove Library
Part Search...
Filter...
Help

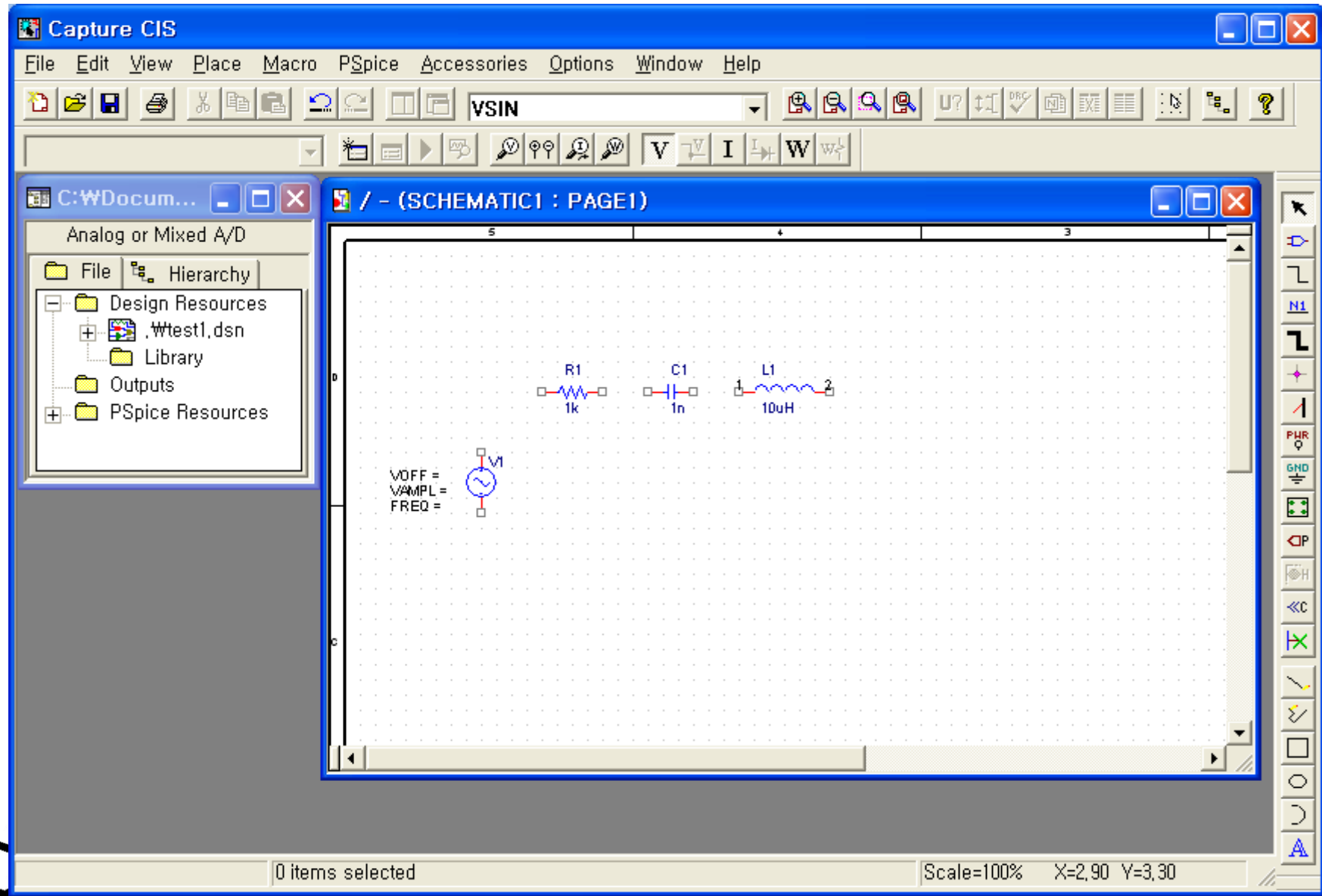


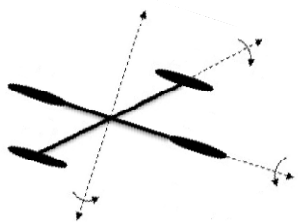
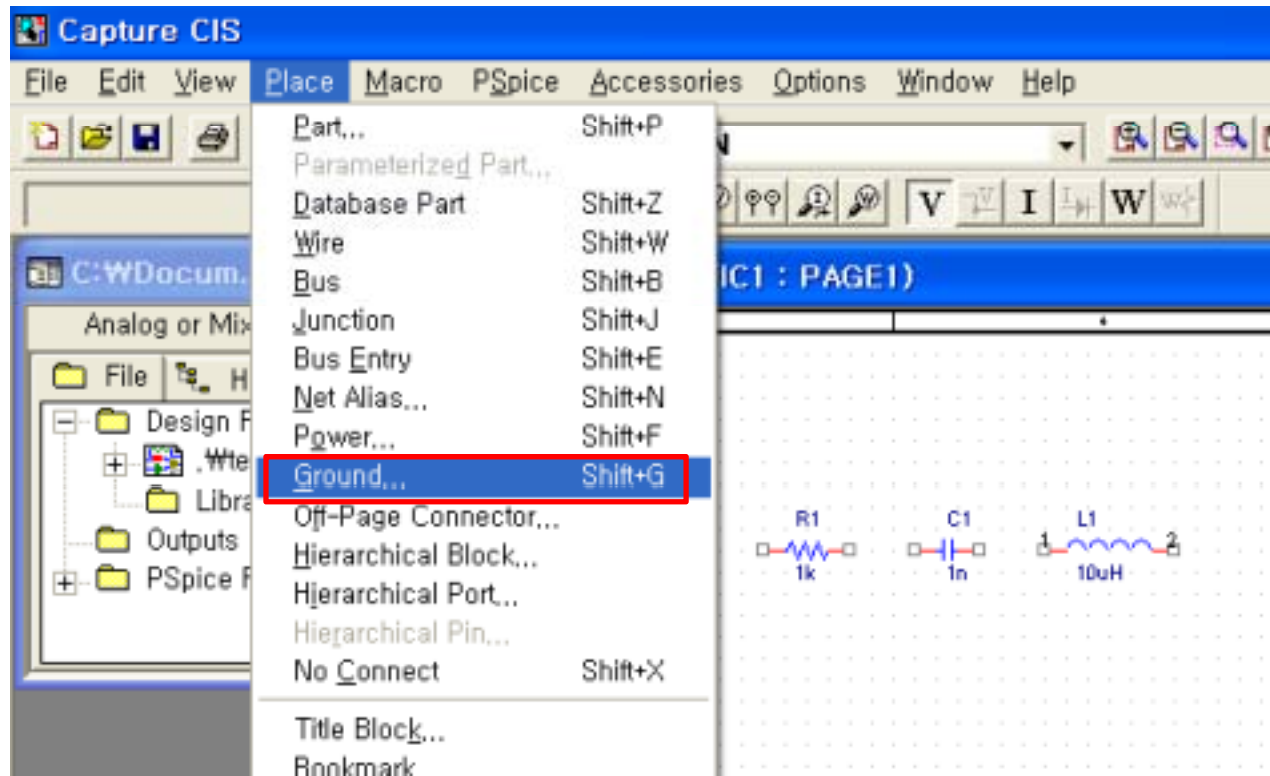


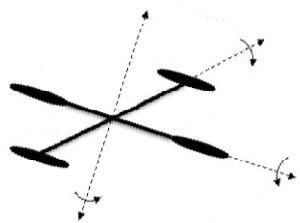
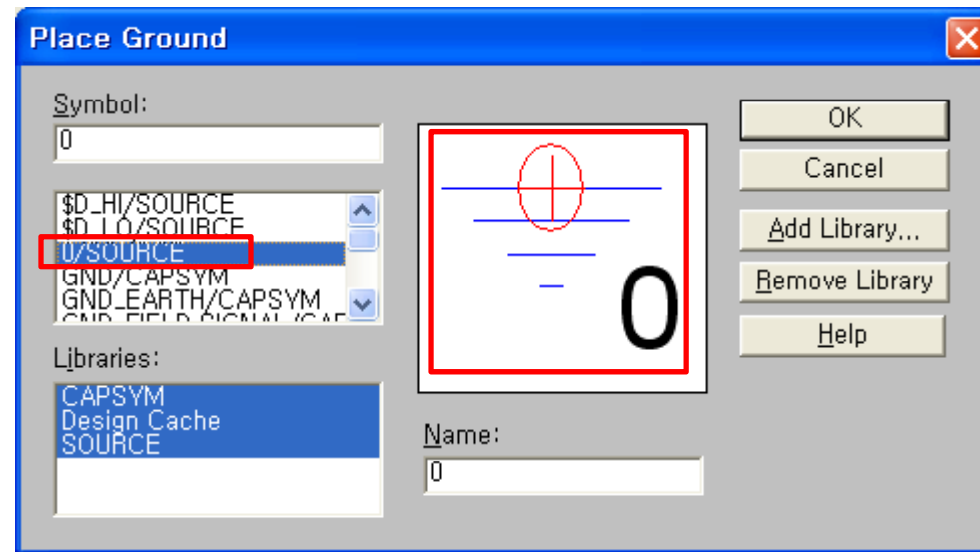


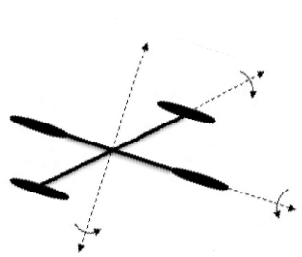
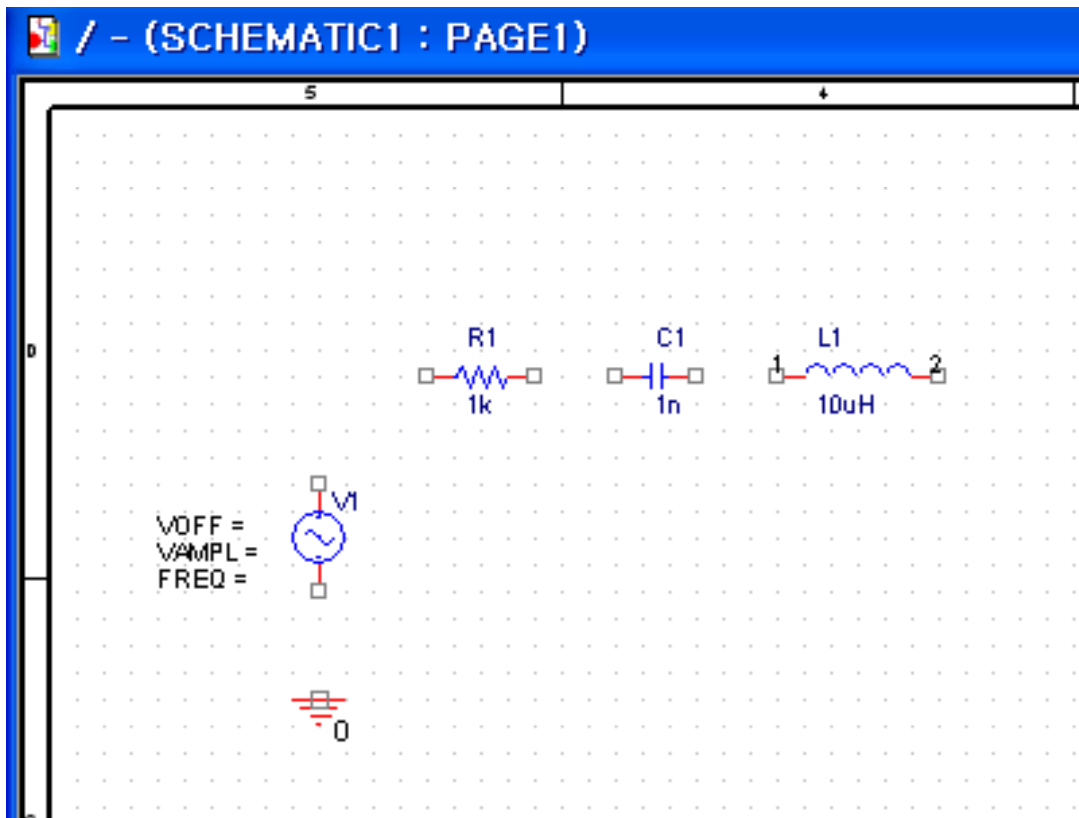


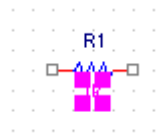












Display Properties [X]

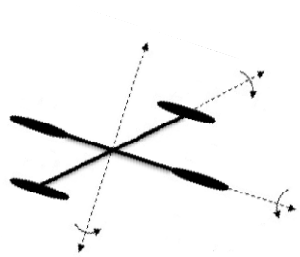
Name: Value
Value:

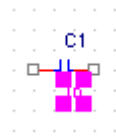
Font
Arial 7 (default)

Color

Rotation
 0° 180°
 90° 270°

Display Format
 Do Not Display
 Value Only
 Name and Value
 Name Only
 Both if Value Exists





Display Properties [X]

Name: Value
Value:

Font: Arial 7 (default)

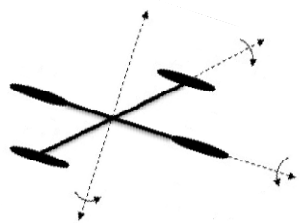
Color:

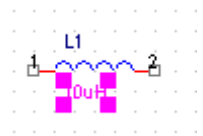
Display Format

- Do Not Display
- Value Only
- Name and Value
- Name Only
- Both if Value Exists

Rotation

- 0°
- 90°
- 180°
- 270°





Display Properties [X]

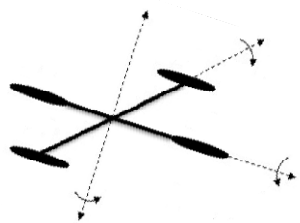
Name: Value
Value:

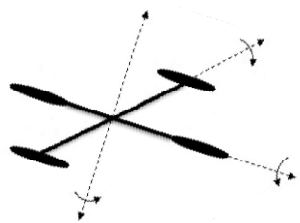
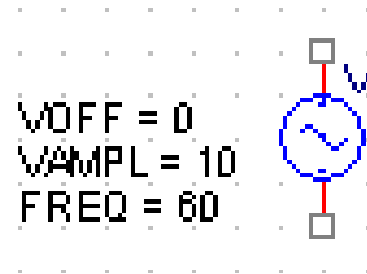
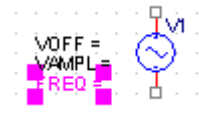
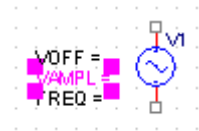
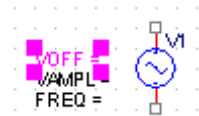
Font: Arial 7 (default)

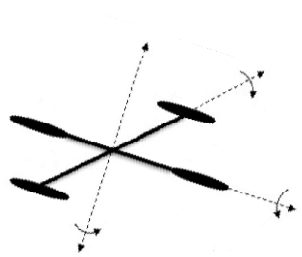
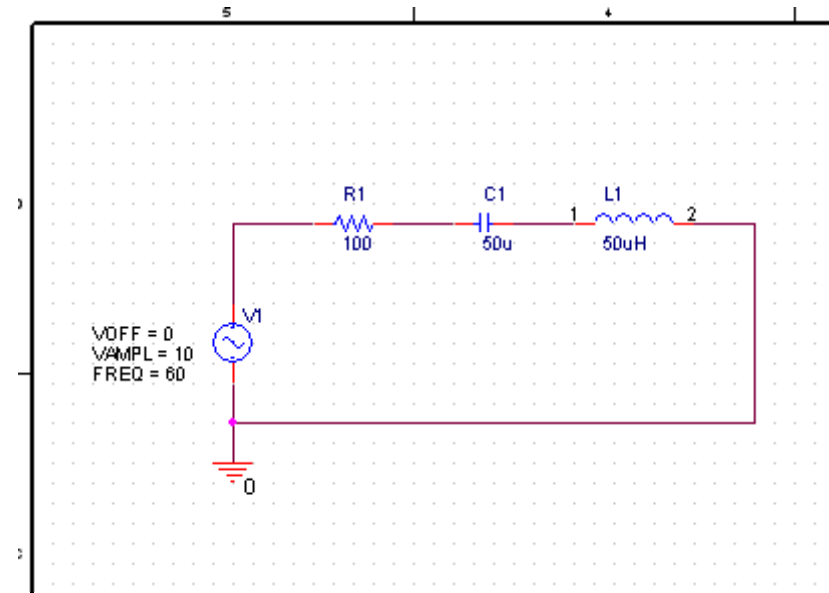
Color:

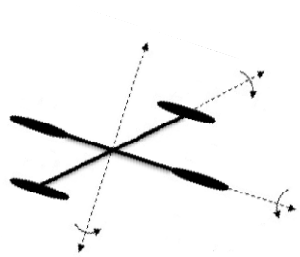
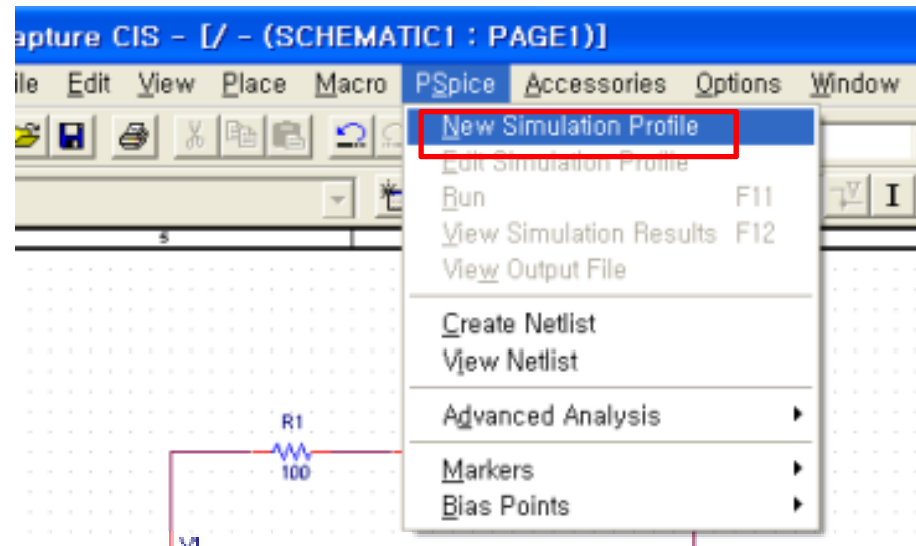
Rotation:
 0° 180°
 90° 270°

Display Format:
 Do Not Display
 Value Only
 Name and Value
 Name Only
 Both if Value Exists









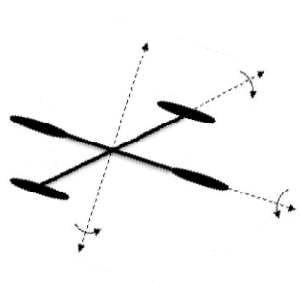


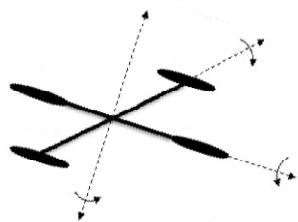
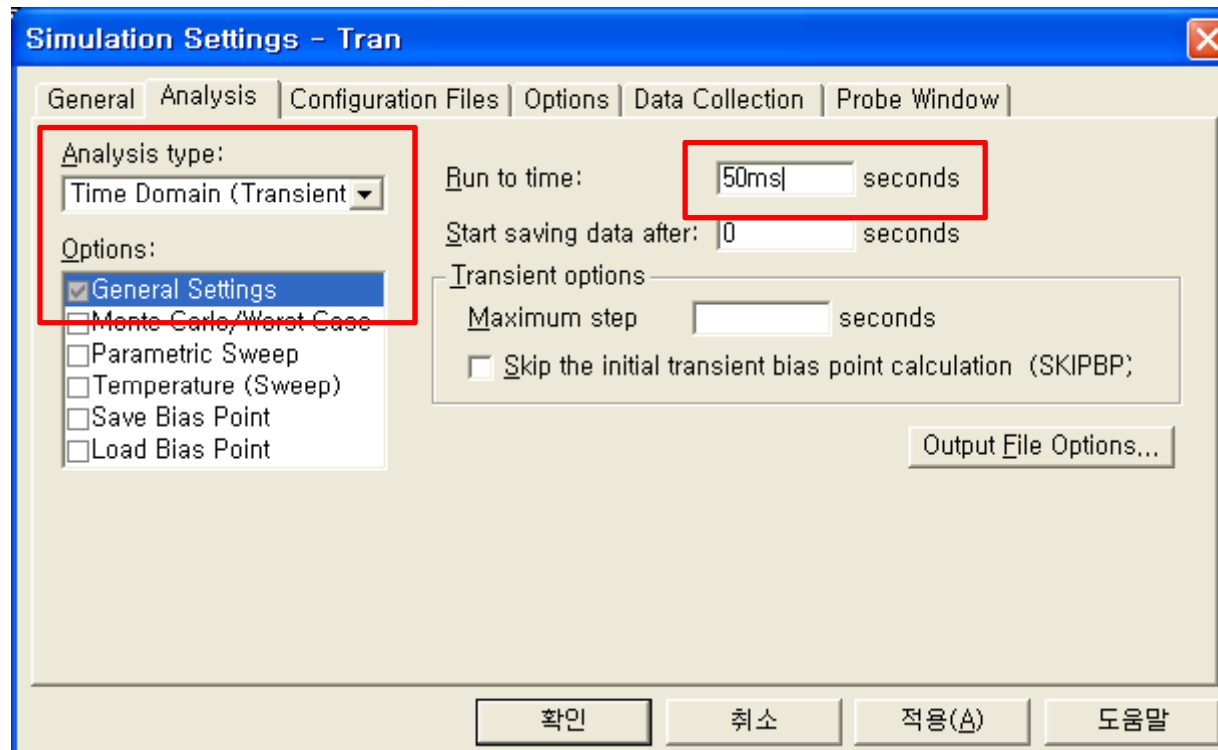
New Simulation ✕

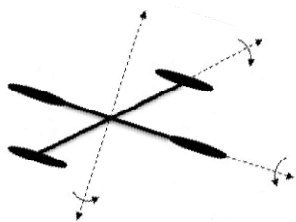
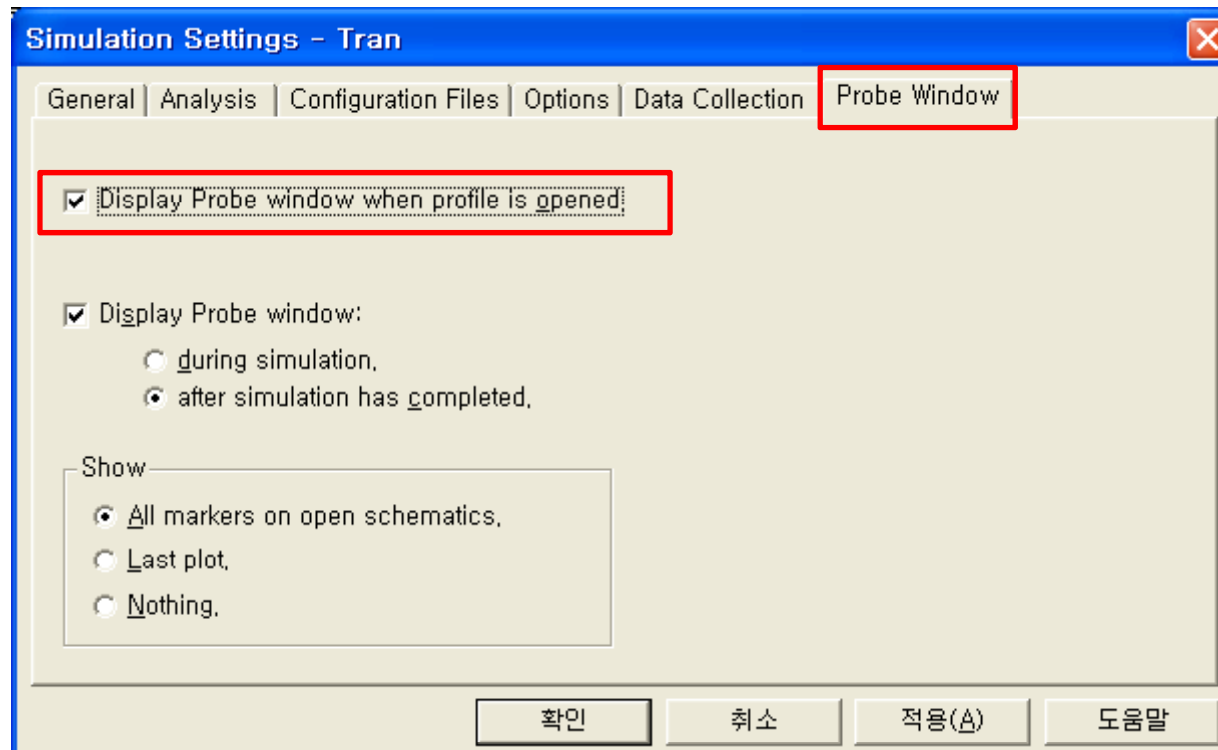
Name:
Create

Inherit From:
... Cancel

Root Schematic: SCHEMATIC1









Capture CIS - [/ - (SCHEMATIC1 : PAGE1)]

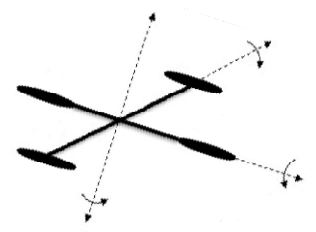
File Edit View Place Macro PSpice Accessories Options Wind

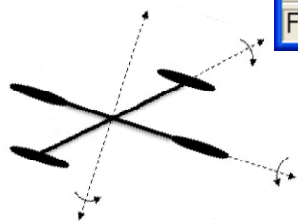
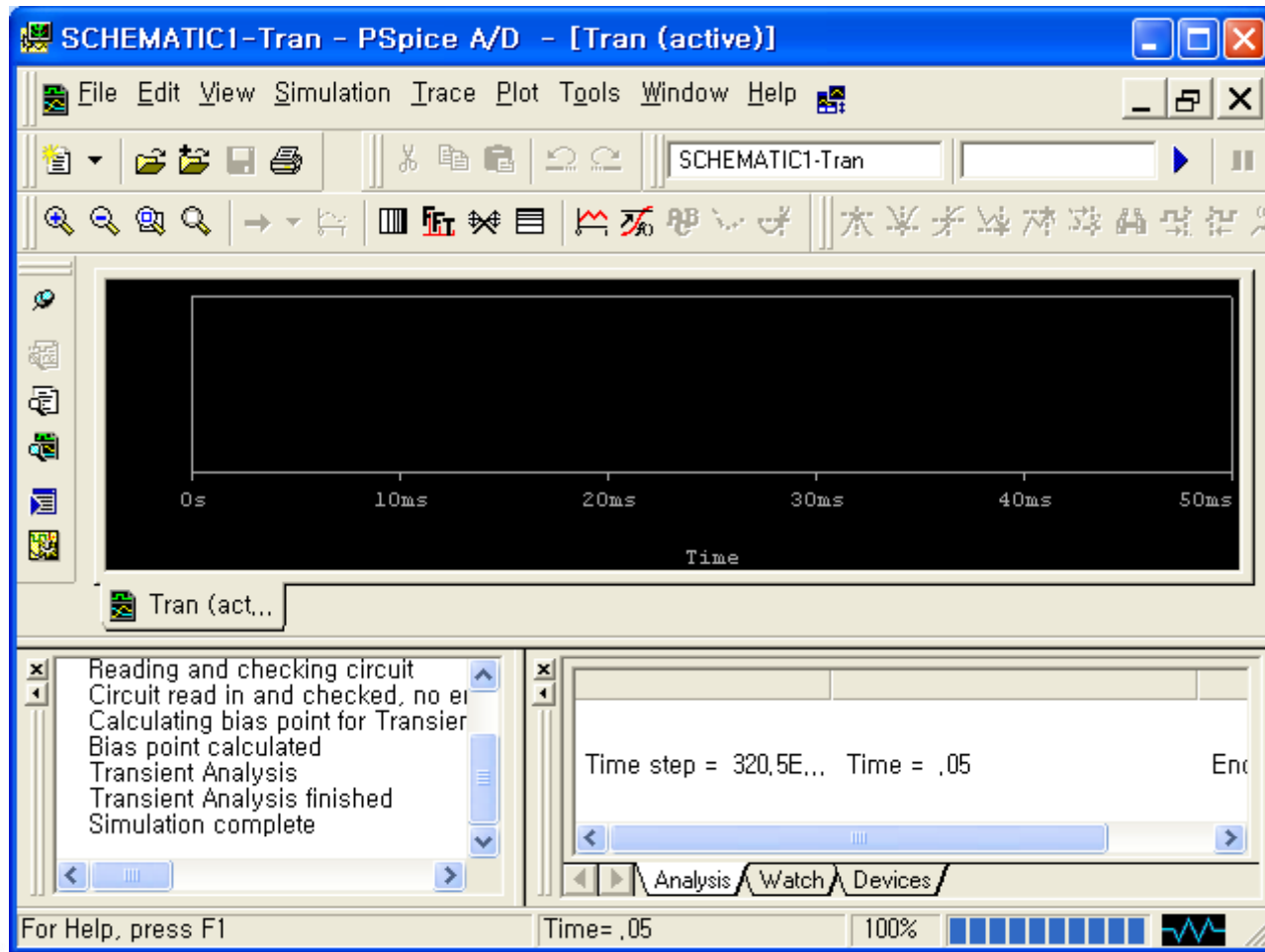
SCHEMATIC1-Tran

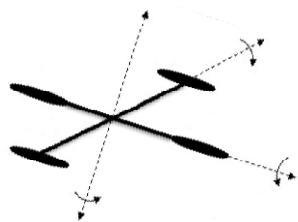
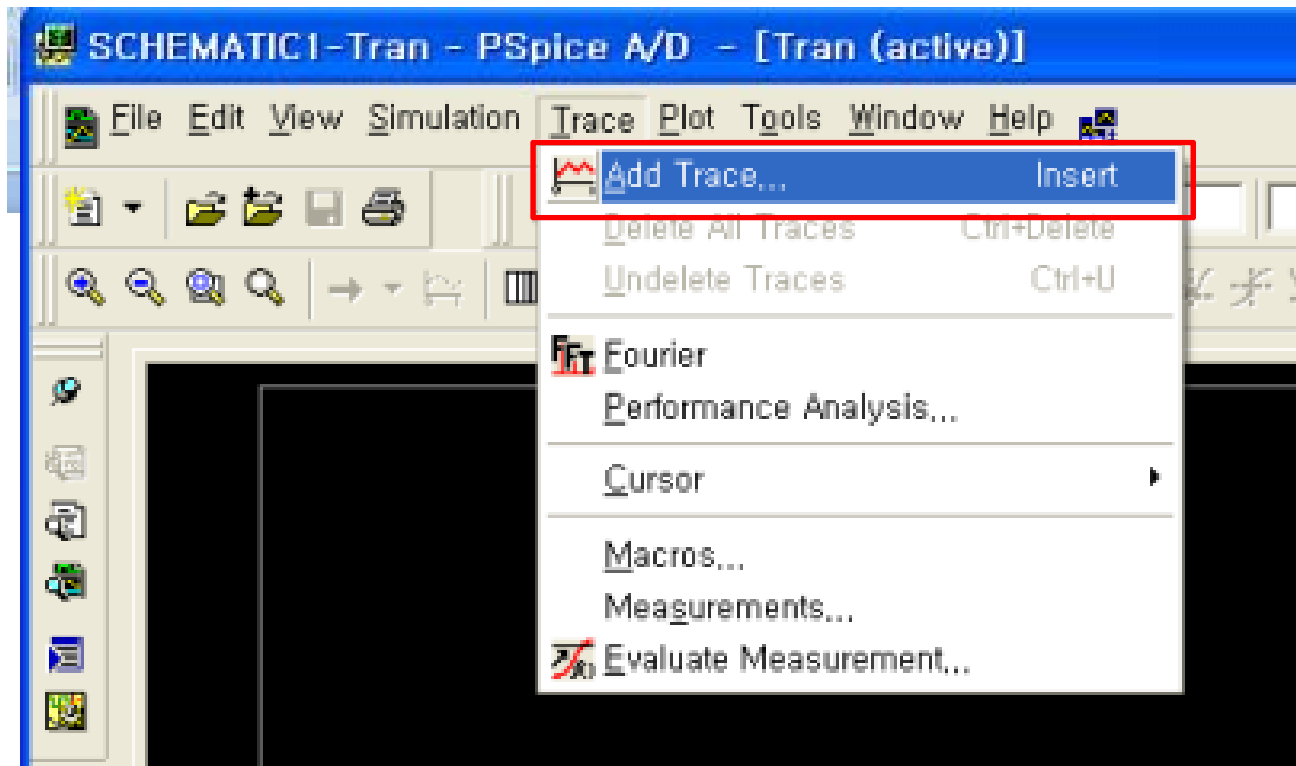
- New Simulation Profile
- Edit Simulation Profile
- Run F11
- View Simulation Results F12
- View Output File
- Create Netlist
- View Netlist
- Advanced Analysis
- Markers
- Bias Points

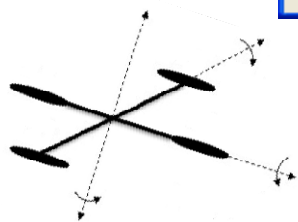
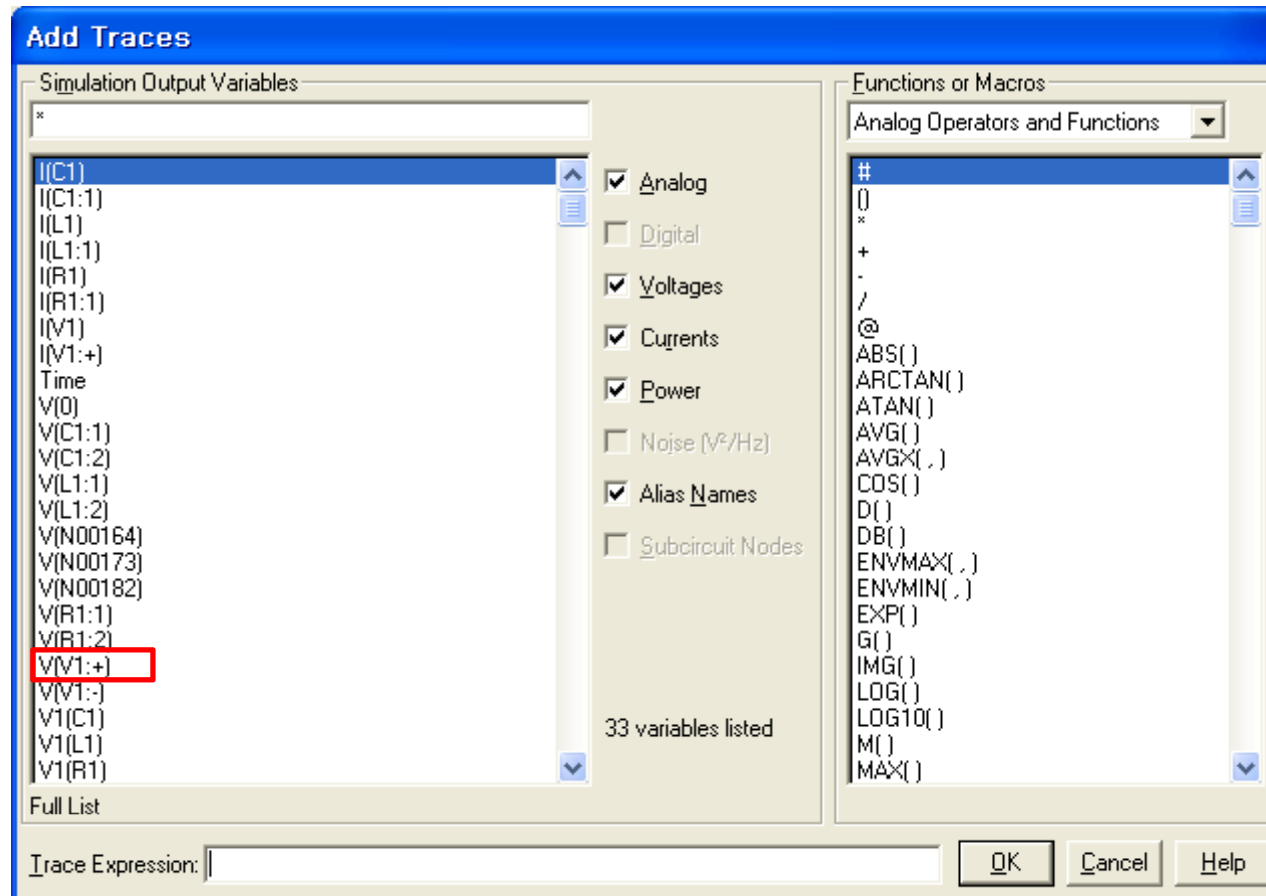
VOFF = 0
VAMPL = 10
FREQ = 60

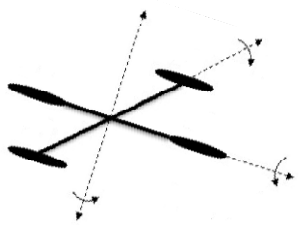
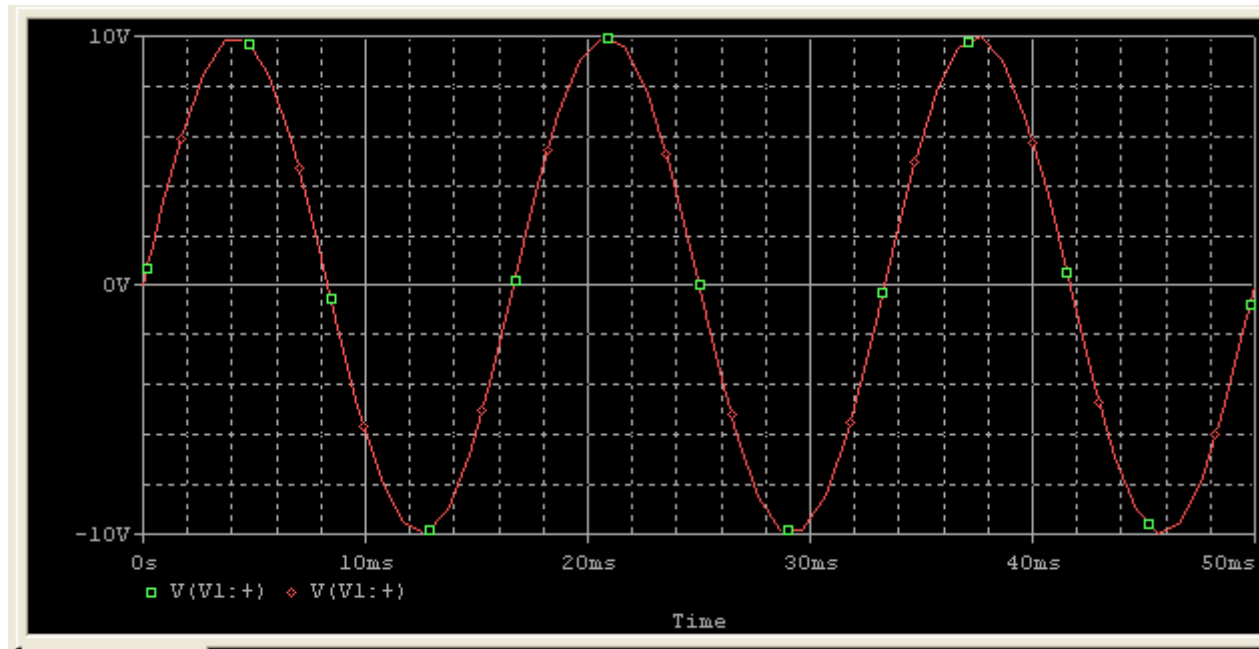
R1
100

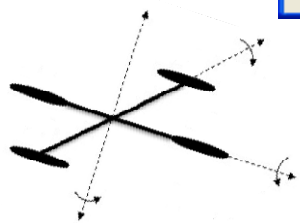
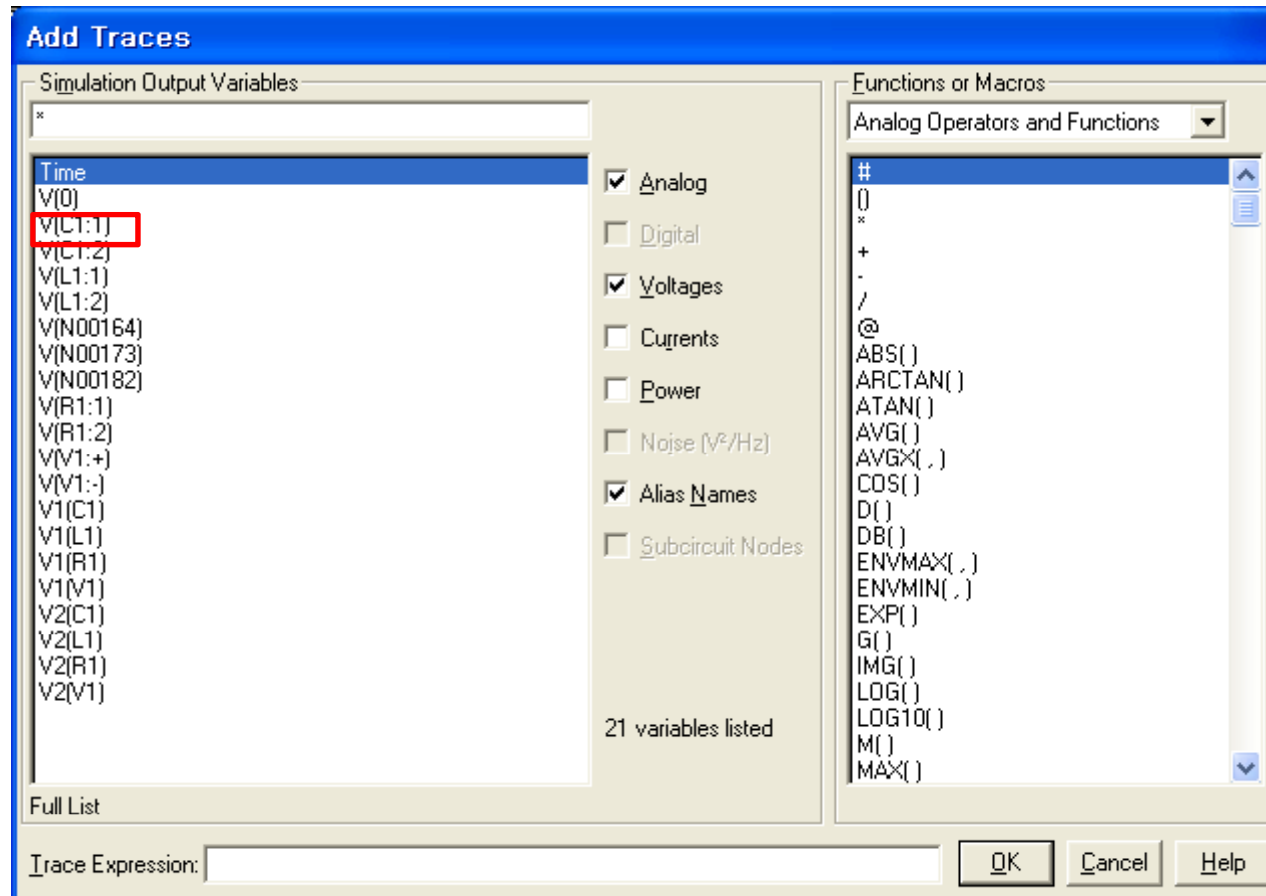


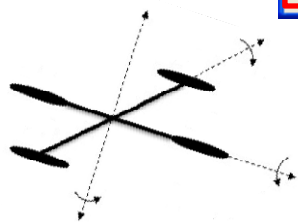
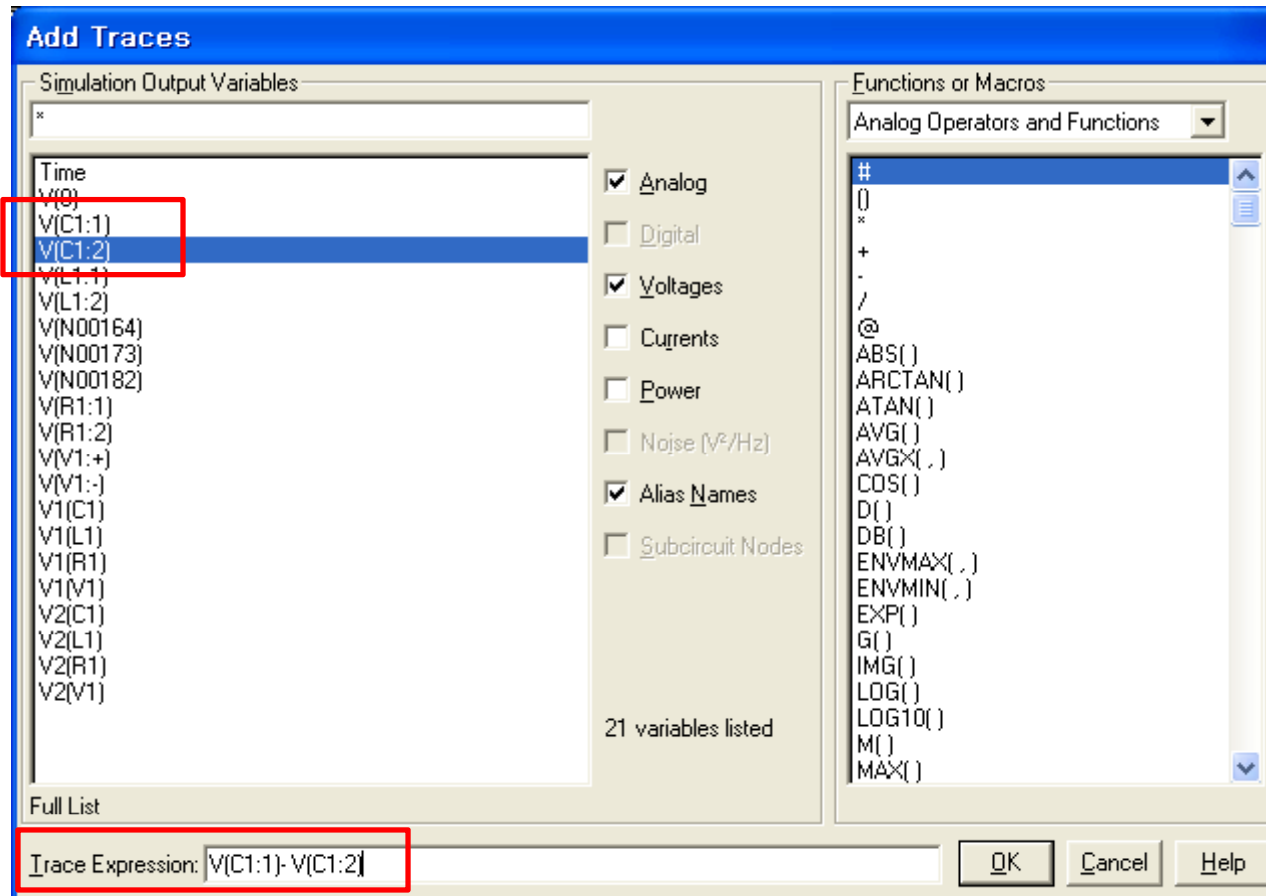


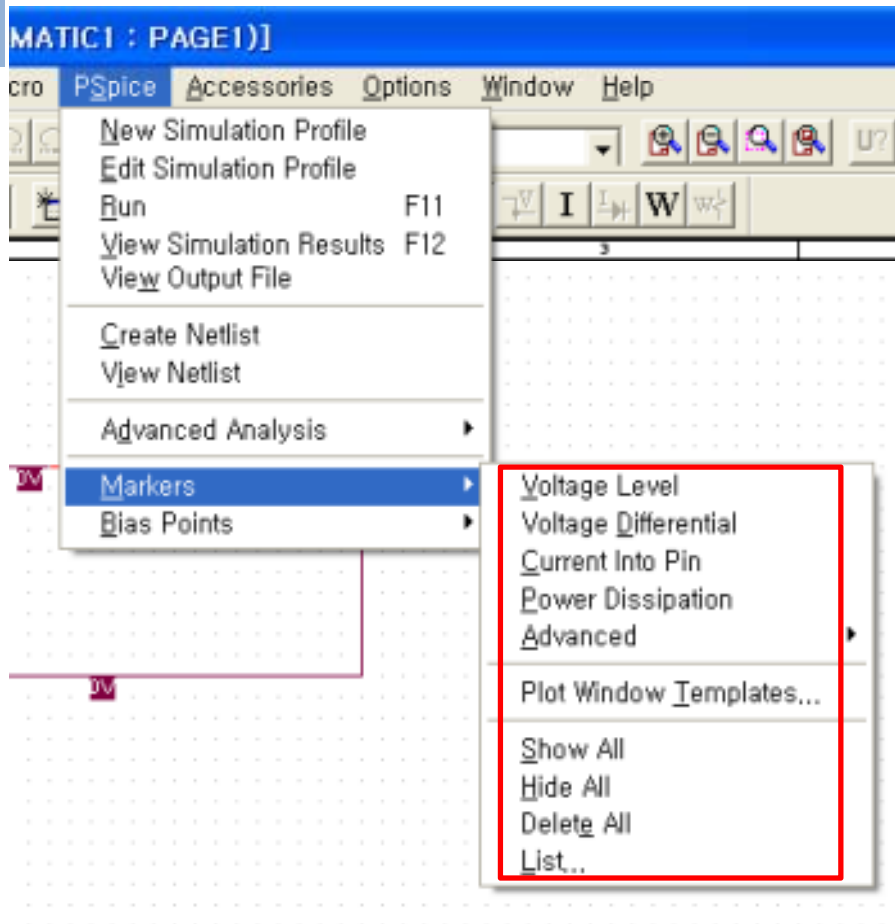












Voltage Level : 접지에 대한 절대 전위
Voltage Differential

: 상대적인 전위차

Current into Pin. : 전류

Power Dissipation : 사용 전력

Advanced : dB, 위상, 실효분, 무효분 등

